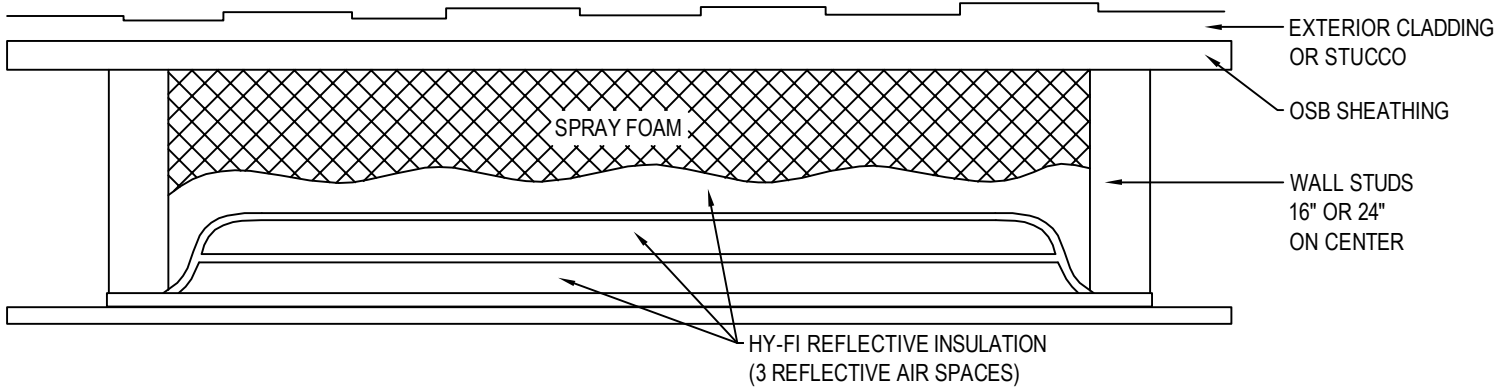




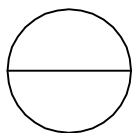
FI-FOIL COMPANY, INC.  
 P.O. BOX 800  
 AUBURNDALE, FL 33823  
 TOLL FREE: 1-800-448-3401  
 FAX: (863) 967-0137  
 www.fifoil.com



| 2X4 FRAMING WITH VARIOUS THICKNESSES OF FOAM 1" AND 2" OF CLOSED CELL AND HY-FI  |  |
|--|--|
| DESCRIPTION  | SYSTEM R-VALUE FOR WALLS                       |
| 2" X 4" WOOD FURRING / 1" CLOSED CELL FOAM / FI-FOIL HY-FI REFLECTIVE INSULATION | I.E., R-8+ AND VALUE OF CLOSED CELL SPRAY FOAM |
| 2" X 4" WOOD FURRING / 2" CLOSED CELL FOAM / FI-FOIL HY-FI REFLECTIVE INSULATION | I.E., R-8+ AND VALUE OF CLOSED CELL SPRAY FOAM |
| 2X6 FRAMING WITH VARIOUS THICKNESSES OF FOAM 4" OF OPEN CELL AND HY-FI           |  |
| 2" X 6" WOOD FURRING / 4" OPEN CELL FOAM / FI-FOIL HY-FI REFLECTIVE INSULATION   | I.E., R-7+ AND VALUE OF CLOSED CELL SPRAY FOAM |

**NOTES:**

- FOR ADDITIONAL INFORMATION ON R-VALUE CALCULATIONS FOR WALL SYSTEMS, PLEASE REFER TO FI-FOIL TECHNICAL REPORT TITLED - "HY-FI HYBRID INSULATION SYSTEM VALUES WITH SPRAY FOAM".
- INSTALLATION TO BE COMPLETED IN ACCORDANCE WITH MANUFACTURER'S SPECIFICATIONS.
- DO NOT SCALE DRAWING.
- THIS DRAWING IS INTENDED FOR USE BY ARCHITECTS, ENGINEERS, CONTRACTORS, CONSULTANTS AND DESIGN PROFESSIONALS FOR PLANNING PURPOSES ONLY. THIS DRAWING MAY NOT BE USED FOR CONSTRUCTION.
- ALL INFORMATION CONTAINED HEREIN WAS CURRENT AT THE TIME OF DEVELOPMENT BUT MUST BE REVIEWED AND APPROVED BY THE PRODUCT MANUFACTURER TO BE CONSIDERED ACCURATE.
- CONTRACTOR'S NOTE: FOR PRODUCT AND COMPANY INFORMATION VISIT [www.CADdetails.com/info](http://www.CADdetails.com/info) AND ENTER REFERENCE NUMBER 647-002.



**HY-FI HYBRID INSULATION SYSTEM**

REFLECTIVE INSULATION AND SPRAY FOAM INSULATION