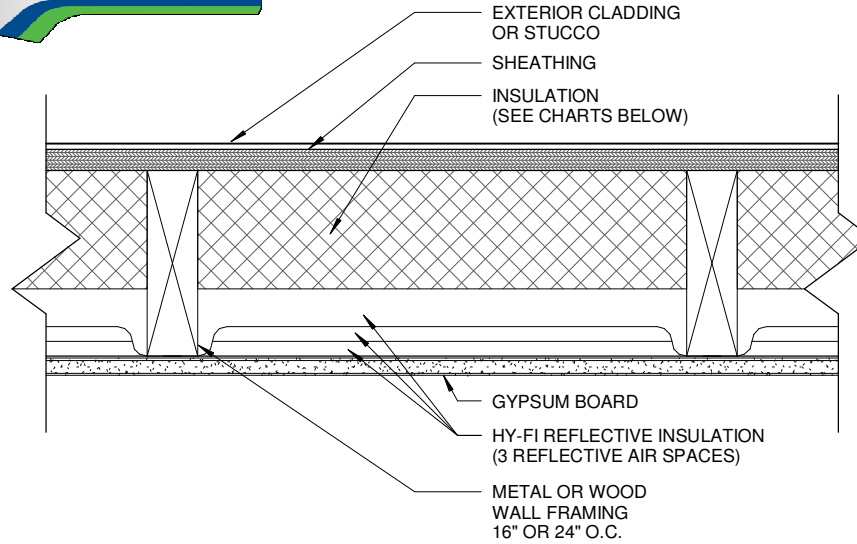




FI-FOIL COMPANY, INC.
 P.O. BOX 800
 AUBURNDALE, FL 33823
 PHONE: 1(800) 448-3401
 FAX: (863) 897-0137
 www.fifoil.com



2x6 FRAMING WITH 3 1/2" FIBERGLASS BATT INSULATION AND HY-FI	
DESCRIPTION	SYSTEM R-VALUE FOR WALLS
2x6 WOOD FURRING / R-13 UNFACED BATT / FI-FOIL HY-FI REFLECTIVE INSULATION	R-22
2x6 WOOD FURRING / R-15 UNFACED BATT / FI-FOIL HY-FI REFLECTIVE INSULATION	R-24

FOR ADDITIONAL INFORMATION ON R-VALUE CALCULATIONS FOR WALL SYSTEMS, PLEASE REFER TO FI-FOIL TECHNICAL REPORT TITLED - "HY-FI HYBRID INSULATION VALUES WITH FIBERGLASS".

2x4 FRAMING WITH 1" AND 2" OF CLOSED CELL FOAM INSULATION AND HY-FI	
DESCRIPTION	SYSTEM R-VALUE FOR WALLS
2x4 WOOD FURRING / 1" CLOSED CELL FOAM / FI-FOIL HY-FI REFLECTIVE INSULATION	I.E., R-8+ AND VALUE OF CLOSED CELL SPRAY FOAM
2x4 WOOD FURRING / 2" CLOSED CELL FOAM / FI-FOIL HY-FI REFLECTIVE INSULATION	I.E., R-8+ AND VALUE OF CLOSED CELL SPRAY FOAM
2x6 FRAMING WITH 4" OF OPEN CELL FOAM INSULATION AND HY-FI	
DESCRIPTION	SYSTEM R-VALUE FOR WALLS
2x6 WOOD FURRING / 4" OPEN CELL FOAM / FI-FOIL HY-FI REFLECTIVE INSULATION	I.E., R-8+ AND VALUE OF CLOSED CELL SPRAY FOAM

FOR ADDITIONAL INFORMATION ON R-VALUE CALCULATIONS FOR WALL SYSTEMS, PLEASE REFER TO FI-FOIL TECHNICAL REPORT TITLED - "HY-FI HYBRID INSULATION SYSTEM VALUES WITH SPRAY FOAM".

2x6 FRAMING WITH 4" OF MINERAL WOOL INSULATION AND HY-FI	
DESCRIPTION	SYSTEM R-VALUE FOR WALLS
2x6 WOOD FURRING / R-16 MINERAL WOOL / FI-FOIL HY-FI REFLECTIVE INSULATION	R-25

FOR ADDITIONAL INFORMATION ON R-VALUE CALCULATIONS FOR WALL SYSTEMS, PLEASE REFER TO FI-FOIL TECHNICAL REPORT TITLED - "HY-FI WITH 4 INCHES OF MINERAL WOOL IN A 6 INCH WALL CAVITY".

NOTES:

1. INSTALLATION TO BE COMPLETED IN ACCORDANCE WITH MANUFACTURER'S SPECIFICATIONS.
2. DO NOT SCALE DRAWING.
3. ALL INFORMATION CONTAINED HEREIN WAS CURRENT AT TIME OF DEVELOPMENT BUT MUST BE REVIEWED AND APPROVED BY THE PRODUCT MANUFACTURER TO BE CONSIDERED ACCURATE.

THIS DRAWING IS FOR GENERAL INFORMATION AND GUIDANCE AND INTENDED SOLELY FOR USE BY ARCHITECTS, ENGINEERS AND OTHER PROFESSIONALS FOR PLANNING PURPOSES. THIS DRAWING MAY NOT BE APPROPRIATE FOR ALL PROJECTS, ASSEMBLIES, SYSTEMS OR CONDITIONS, AND IN NO EVENT SHALL THIS DRAWING BE USED FOR CONSTRUCTION. ULTIMATELY, THE DESIGN AND DETAILING OF THE PROJECT, ASSEMBLY OR SYSTEM IS THE RESPONSIBILITY OF A PROFESSIONAL, AND ALL PROJECTS MUST COMPLY WITH APPLICABLE BUILDING CODES AND STANDARDS. FI-FOIL COMPANY, INC. DISCLAIMS ANY RESPONSIBILITY OR LIABILITY FOR THE USE OF THIS DRAWING AND FOR THE ARCHITECTURE, DESIGN, ENGINEERING OR WORKMANSHIP OF ANY PROJECT, ASSEMBLY OR SYSTEM. ANY PRODUCTS MANUFACTURED BY PERSONS OTHER THAN FI-FOIL COMPANY, INC. ARE PRESENTED FOR ILLUSTRATION ONLY. PLEASE CONTACT THE MANUFACTURER OF SUCH PRODUCTS FOR INSTALLATION INSTRUCTIONS. FI-FOIL COMPANY, INC. MAKES NO REPRESENTATION OR WARRANTY, EXPRESS OR IMPLIED, CONCERNING THIS DRAWING AND SPECIFICALLY DISCLAIMS ANY IMPLIED WARRANTY OF FITNESS FOR A PARTICULAR USE.

Issued Date 10/2019

Frame Wall with HY-Fi Hybrid Insulation System