



## Installation Sheet

# Flexible Sheet Air Barriers

### Tools Needed



Tape measure



Utility knife or scissors



Stapler

### SPLICES

For splices in wall cavities, overlap the material 1" to 2" to complete the cavity and tape the seam with Fi-Foil FSK reflective tape

### NOTES

1. Tape any tears in the material
2. When using with metal framing, wipe down the metal, then use double-sided tape or spray adhesive on metal framing before attaching the air barrier; proceed using this same basic procedure throughout the installation; this will hold the insulation in place until the wall board is applied

### STEP 1

#### Installing **SkyFlex**:

Apply the product flat to the face of the wall; attach the product to the vertical wood studs with a staple every 4" to 8" or with metal framing attach the product using double-sided tape or spray adhesive

#### Installing **SkyFlex VT**:

Apply and attach same as above installing the matte side of product facing the air film

### STEP 2

Overlap the layers a minimum of 1" to 2"; tape joints with FI-Foil FSK reflective tape

### STEP 3

Cut the product material so it fits snugly around any outlets; seal the edge of material to the box with either tape, foam or caulk

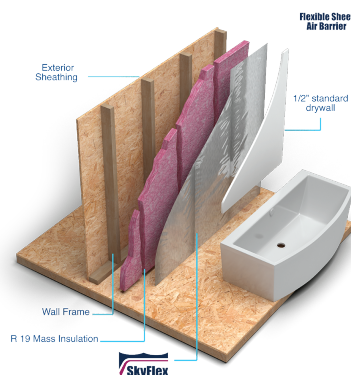
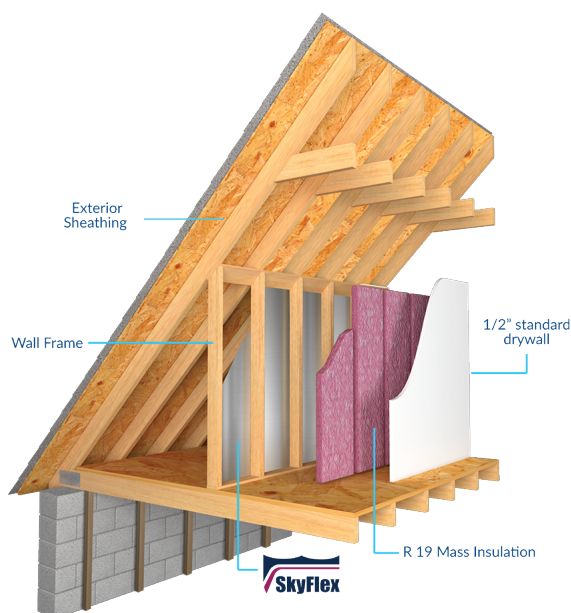
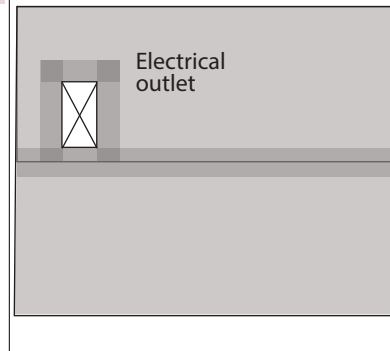
Diagram 1



Diagram 2



Diagram 3



For additional information and installation instructions visit product pages at:

**Fifoil.com**

Fi-Foil Company, Inc. Tel 800.448.3401

High Performance Insulation Systems since 1983

SERVICE | INTEGRITY | INNOVATION | Fifoil.com

2019 Jun

