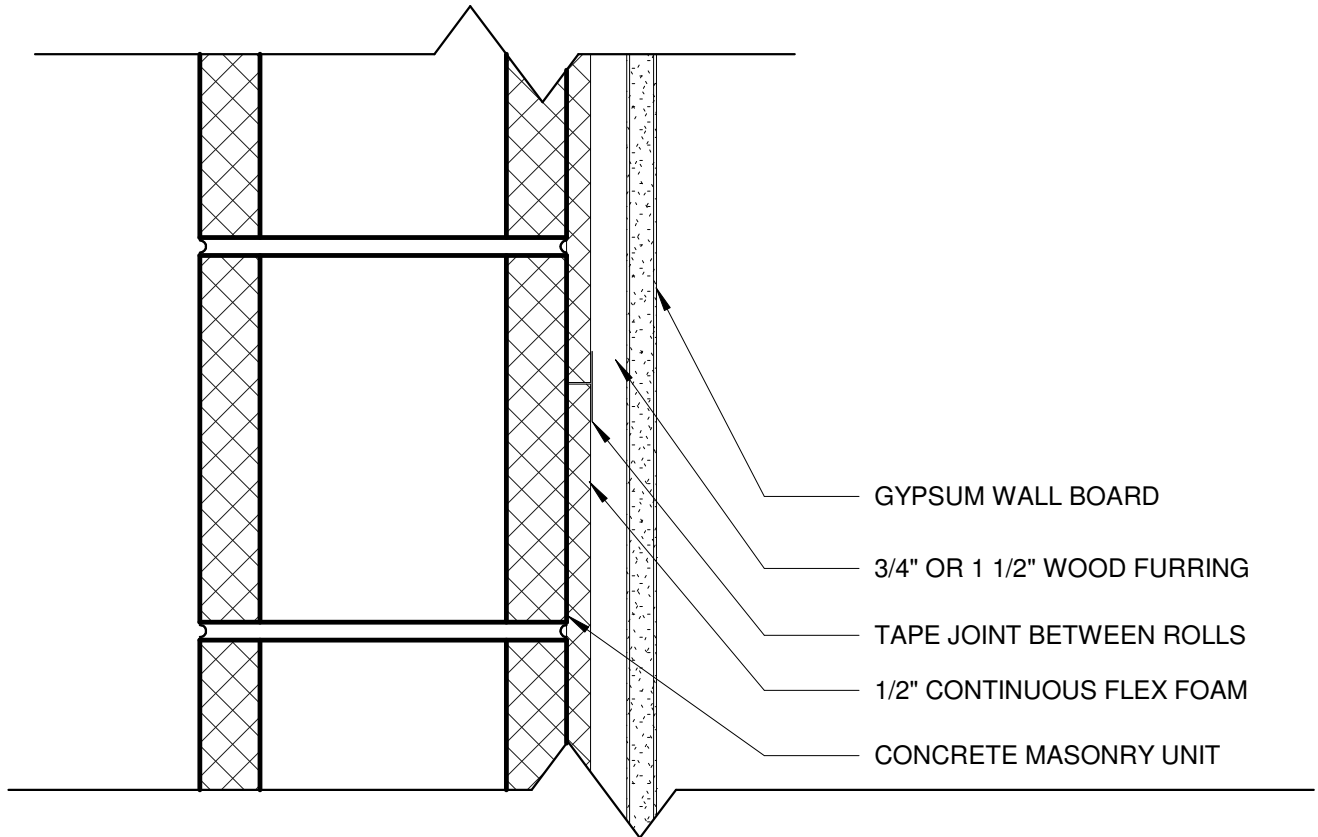




FI-FOIL COMPANY, INC.  
 P.O. BOX 800  
 AUBURNDALE, FL 33823  
 PHONE: 1(800) 448-3401  
 FAX: (863) 897-0137  
 www.fifoil.com



1/2" CONTINUOUS FLEX FOAM ON WOOD FURRING		
DESCRIPTION	3/4" ENCLOSED AIR CAVITY	1 1/2" ENCLOSED AIR CAVITY
CONTINUOUS INSULATION	R-4.5	R-4.7

**NOTES:**

1. INSTALLATION TO BE COMPLETED IN ACCORDANCE WITH MANUFACTURER'S SPECIFICATIONS.
2. DO NOT SCALE DRAWING.
3. ALL INFORMATION CONTAINED HEREIN WAS CURRENT AT TIME OF DEVELOPMENT BUT MUST BE REVIEWED AND APPROVED BY THE PRODUCT MANUFACTURER TO BE CONSIDERED ACCURATE.

THIS DRAWING IS FOR GENERAL INFORMATION AND GUIDANCE AND INTENDED SOLELY FOR USE BY ARCHITECTS, ENGINEERS AND OTHER PROFESSIONALS FOR PLANNING PURPOSES. THIS DRAWING MAY NOT BE APPROPRIATE FOR ALL PROJECTS, ASSEMBLIES, SYSTEMS OR CONDITIONS, AND IN NO EVENT SHALL THIS DRAWING BE USED FOR CONSTRUCTION. ULTIMATELY, THE DESIGN AND DETAILING OF THE PROJECT, ASSEMBLY OR SYSTEM IS THE RESPONSIBILITY OF A PROFESSIONAL, AND ALL PROJECTS MUST COMPLY WITH APPLICABLE BUILDING CODES AND STANDARDS. FI-FOIL COMPANY, INC. DISCLAIMS ANY RESPONSIBILITY OR LIABILITY FOR THE USE OF THIS DRAWING AND FOR THE ARCHITECTURE, DESIGN, ENGINEERING OR WORKMANSHIP OF ANY PROJECT, ASSEMBLY OR SYSTEM. ANY PRODUCTS MANUFACTURED BY PERSONS OTHER THAN FI-FOIL COMPANY, INC. ARE PRESENTED FOR ILLUSTRATION ONLY. PLEASE CONTACT THE MANUFACTURER OF SUCH PRODUCTS FOR INSTALLATION INSTRUCTIONS. FI-FOIL COMPANY, INC. MAKES NO REPRESENTATION OR WARRANTY, EXPRESS OR IMPLIED, CONCERNING THIS DRAWING AND SPECIFICALLY DISCLAIMS ANY IMPLIED WARRANTY OF FITNESS FOR A PARTICULAR USE.

Issued Date 06/22/23

Flex Foam on CMU - 3/4" Wood Furring