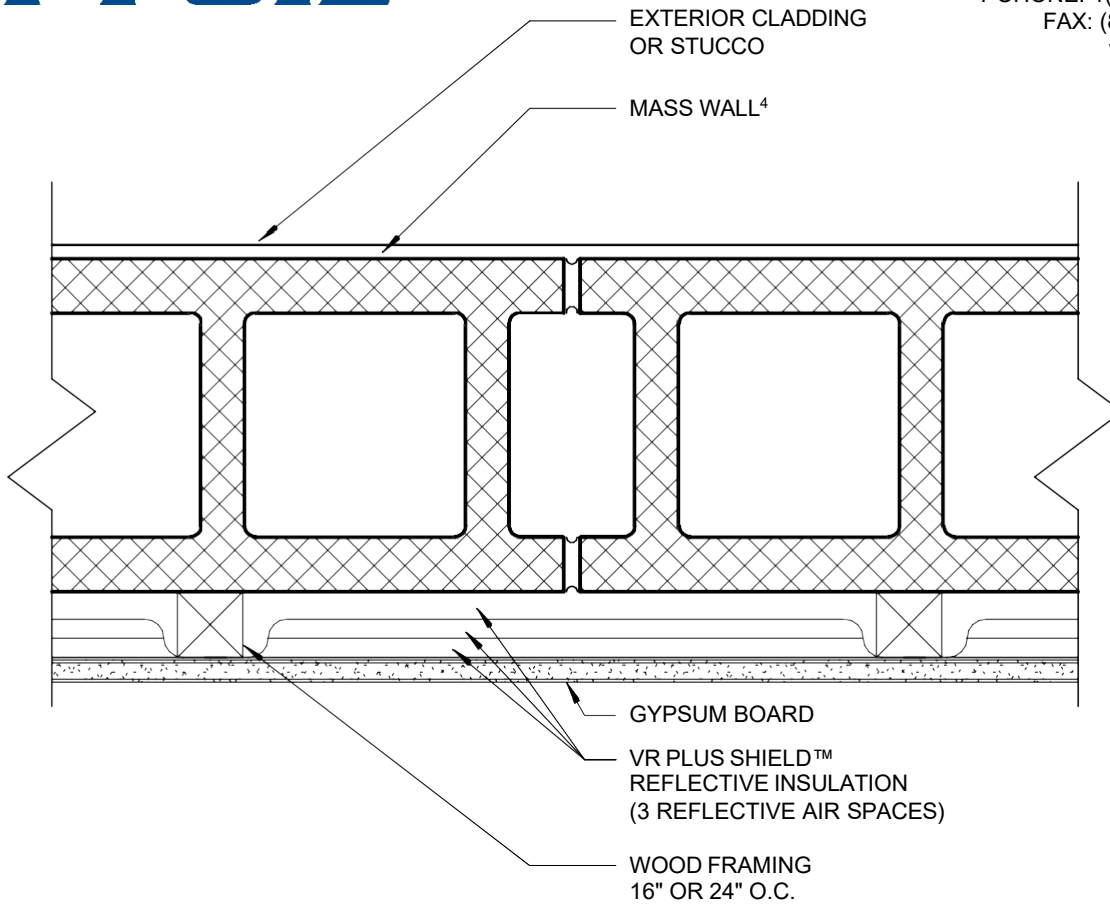




P.O. BOX 800
 AUBURNDALE, FL 33823
 POHONE: 1(800) 448-3401
 FAX: (863) 897-0137
 www.fifoil.com



VR Plus Shield™ Reflective Wall Insulation PERFORATED		
DESCRIPTION	R-VALUE	
Cavity Width	16"	24"
VR Plus Shield™ installed facing 1-1/2" enclosed cavity air space	R-6.5	R-6.5

NOTES:

1. INSTALLATION TO BE COMPLETED IN ACCORDANCE WITH MANUFACTURER'S SPECIFICATIONS.
2. DO NOT SCALE DRAWING.
3. ALL INFORMATION CONTAINED HEREIN WAS CURRENT AT TIME OF DEVELOPMENT BUT MUST BE REVIEWED AND APPROVED BY THE PRODUCT MANUFACTURER TO BE CONSIDERED ACCURATE.
4. MASS WALL REFERS TO ANY CONCRETE, CONCRETE BLOCK (CMU), CAST-IN-PLACE OR BRICK (EXCLUDING BRICK VENEER).

THIS DRAWING IS FOR GENERAL INFORMATION AND GUIDANCE AND INTENDED SOLELY FOR USE BY ARCHITECTS, ENGINEERS AND OTHER PROFESSIONALS FOR PLANNING PURPOSES. THIS DRAWING MAY NOT BE APPROPRIATE FOR ALL PROJECTS, ASSEMBLIES, SYSTEMS OR CONDITIONS, AND IN NO EVENT SHALL THIS DRAWING BE USED FOR CONSTRUCTION. ULTIMATELY, THE DESIGN AND DETAILING OF THE PROJECT, ASSEMBLY OR SYSTEM IS THE RESPONSIBILITY OF A PROFESSIONAL, AND ALL PROJECTS MUST COMPLY WITH APPLICABLE BUILDING CODES AND STANDARDS. FI-FOIL COMPANY, INC. DISCLAIMS ANY RESPONSIBILITY OR LIABILITY FOR THE USE OF THIS DRAWING AND FOR THE ARCHITECTURE, DESIGN, ENGINEERING OR WORKMANSHIP OF ANY PROJECT, ASSEMBLY OR SYSTEM. ANY PRODUCTS MANUFACTURED BY PERSONS OTHER THAN FI-FOIL COMPANY, INC. ARE PRESENTED FOR ILLUSTRATION ONLY. PLEASE CONTACT THE MANUFACTURER OF SUCH PRODUCTS FOR INSTALLATION INSTRUCTIONS. FI-FOIL COMPANY, INC. MAKES NO REPRESENTATION OR WARRANTY, EXPRESS OR IMPLIED, CONCERNING THIS DRAWING AND SPECIFICALLY DISCLAIMS ANY IMPLIED WARRANTY OF FITNESS FOR A PARTICULAR USE.

Issued Date	11/25/2025
Mass Wall Cavity Assembly VR-Plus Shield™ on Wood Framing	