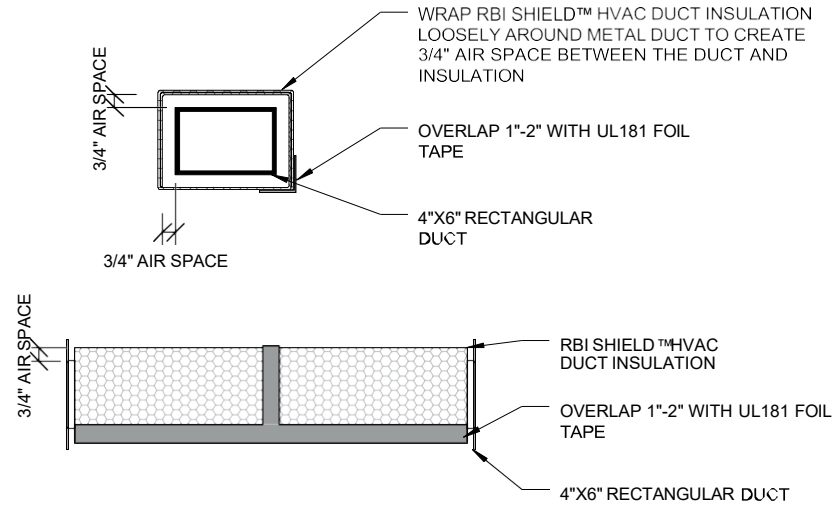




P.O. BOX 800
 AUBURNDALE, FL 33823
 POHONE: 1(800) 448-3401
 FAX: (863) 897-0137
 www.fifoil.com



TECHNICAL DATA			
TEMPERATURE RANGE	NOMINAL THICKNESS		WEIGHT
NOT TO EXCEED 180°F	5/16"		0.77 OZ. PER SQFT.
FLAMMABILITY		STRENGTH & PERFORMANCE	
ASTM E84 In accordance with E2599	CLASS A	AASTM C1371 Thermal Emittance	0.06
ASTM E84 Flame Spread	0	ASTM E96 Water Vapor Permeance	0.01 PERMS
ASTM E84 Smoke Developed	<50	ASTM C1258 Aging Resistance - Corrosion	No Corrosion
		ASTM C1258 Aging Resistance - Delamination	No Delamination
		ASTM C1668 Bleeding & Delamination	No Bleeding or Delamination
		ASTM C1668 Pliability	No Cracking or Delamination
		ASTM C1668 Fungi Resistance	No Fungi Growth
		ASTM C411 Hot Surface Performance	PASS (up to 250°F)

NOTES:

- 1- THE INSTALLATION INSTRUCTIONS IN THIS GUIDE ARE MEANT AS RECOMMENDATIONS ONLY; CHECKING LOCAL BUILDING CODES AND FOLLOWING REQUIRED CONSTRUCTION METHODS IS THE RESPONSIBILITY OF THE INSTALLER. INSTRUCTIONS ARE MEANT TO ILLUSTRATE RELATIVE PLACEMENT OF RBI SHIELD™ HVAC DUCT INSULATION PRODUCTS AND FI-FOIL® MAKES NO CLAIMS THAT THESE ASSEMBLIES ARE UNIVERSALLY ACCURATE.
- 2- RBI SHIELD™ HVAC DUCT INSULATION PRODUCTS ARE DESIGNED FOR INDOOR APPLICATIONS ONLY; ALL WARRANTIES ARE VOID IF USED IN EXTERIOR BUILDING APPLICATIONS.
- 3- NOT TO BE USED AS DUCT LINER.
- 4- NOT FOR USE IN DIRECT CONTACT ON SURFACES THAT EXCEED 180°F.

THIS DRAWING IS FOR GENERAL INFORMATION AND GUIDANCE AND INTENDED SOLELY FOR USE BY ARCHITECTS, ENGINEERS AND OTHER PROFESSIONALS FOR PLANNING PURPOSES. THIS DRAWING MAY NOT BE APPROPRIATE FOR ALL PROJECTS, ASSEMBLIES, SYSTEMS OR CONDITIONS, AND IN NO EVENT SHALL THIS DRAWING BE USED FOR CONSTRUCTION. ULTIMATELY, THE DESIGN AND DETAILING OF THE PROJECT, ASSEMBLY OR SYSTEM IS THE RESPONSIBILITY OF A PROFESSIONAL, AND ALL PROJECTS MUST COMPLY WITH APPLICABLE BUILDING CODES AND STANDARDS. FI-FOIL COMPANY, INC. DISCLAIMS ANY RESPONSIBILITY OR LIABILITY FOR THE USE OF THIS DRAWING AND FOR THE ARCHITECTURE, DESIGN, ENGINEERING OR WORKMANSHIP OF ANY PROJECT, ASSEMBLY OR SYSTEM. ANY PRODUCTS MANUFACTURED BY PERSONS OTHER THAN FI-FOIL COMPANY, INC. ARE PRESENTED FOR ILLUSTRATION ONLY. PLEASE CONTACT THE MANUFACTURER OF SUCH PRODUCTS FOR INSTALLATION INSTRUCTIONS. FI-FOIL COMPANY, INC. MAKES NO REPRESENTATION OR WARRANTY, EXPRESS OR IMPLIED, CONCERNING THIS DRAWING AND SPECIFICALLY DISCLAIMS ANY IMPLIED WARRANTY OF FITNESS FOR A PARTICULAR USE.

Issued Date	11/25/2025
HVAC Duct Insulation R-4.2 RBI Shield™ HVAC	