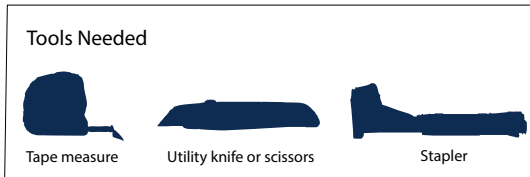




# Flexible Sheet Air Barriers



**SPLICES**

For splices in wall cavities, overlap the material 1" to 2" to complete the cavity and tape the seam with Fi-Foil FSK reflective tape

**NOTES**

1. Tape any tears in the material
2. When using with metal framing, wipe down the metal, then use double-sided tape or spray adhesive on metal framing before attaching the air barrier; proceed using this same basic procedure throughout the installation; this will hold the insulation in place until the wall board is applied

**STEP 1**

**Installing SkyFlex:**  
Apply the product flat to the face of the wall; attach the product to the vertical wood studs with a staple every 4" to 8" or with metal framing attach the product using double-sided tape or spray adhesive

**Installing SkyFlex VT:**  
Apply and attach same as above installing the matte side of product facing the air film

**STEP 2**

Overlap the layers a minimum of 1" to 2"; tape joints with Fi-Foil FSK reflective tape

**STEP 3**

Cut the product material so it fits snugly around any outlets; seal the edge of material to the box with either tape, foam or caulk

Diagram 1

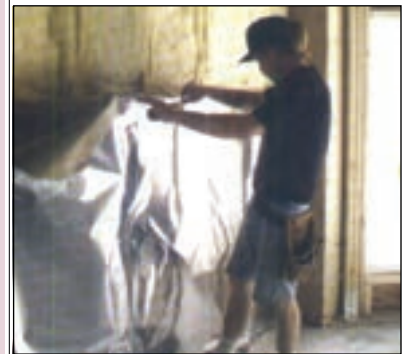
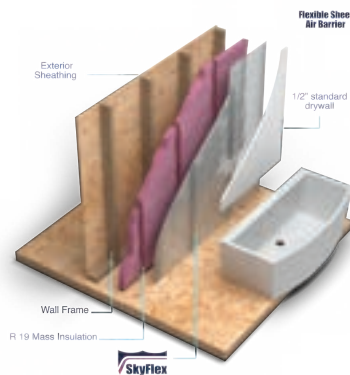
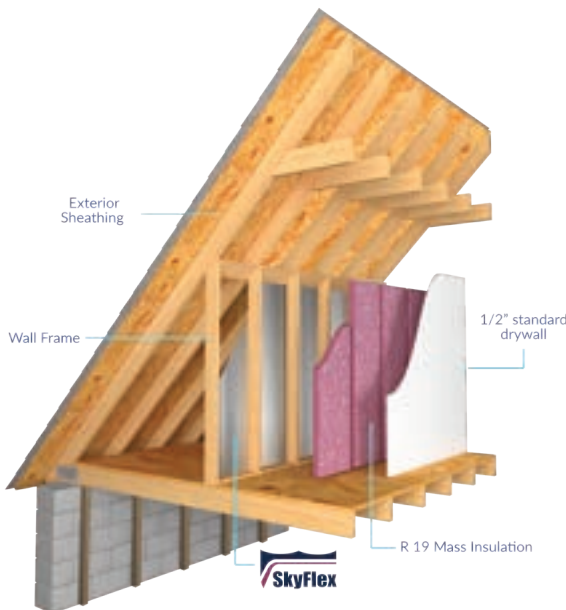
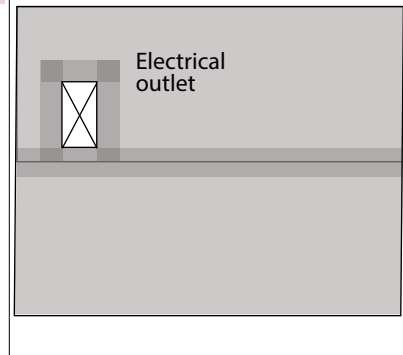


Diagram 2



Diagram 3



For additional information and installation instructions visit product pages at:



Fi-Foil Company, Inc. Tel 800.448.3401

High Performance Insulation Systems since 1983

SERVICE | INTEGRITY | INNOVATION | Fifoil.com

